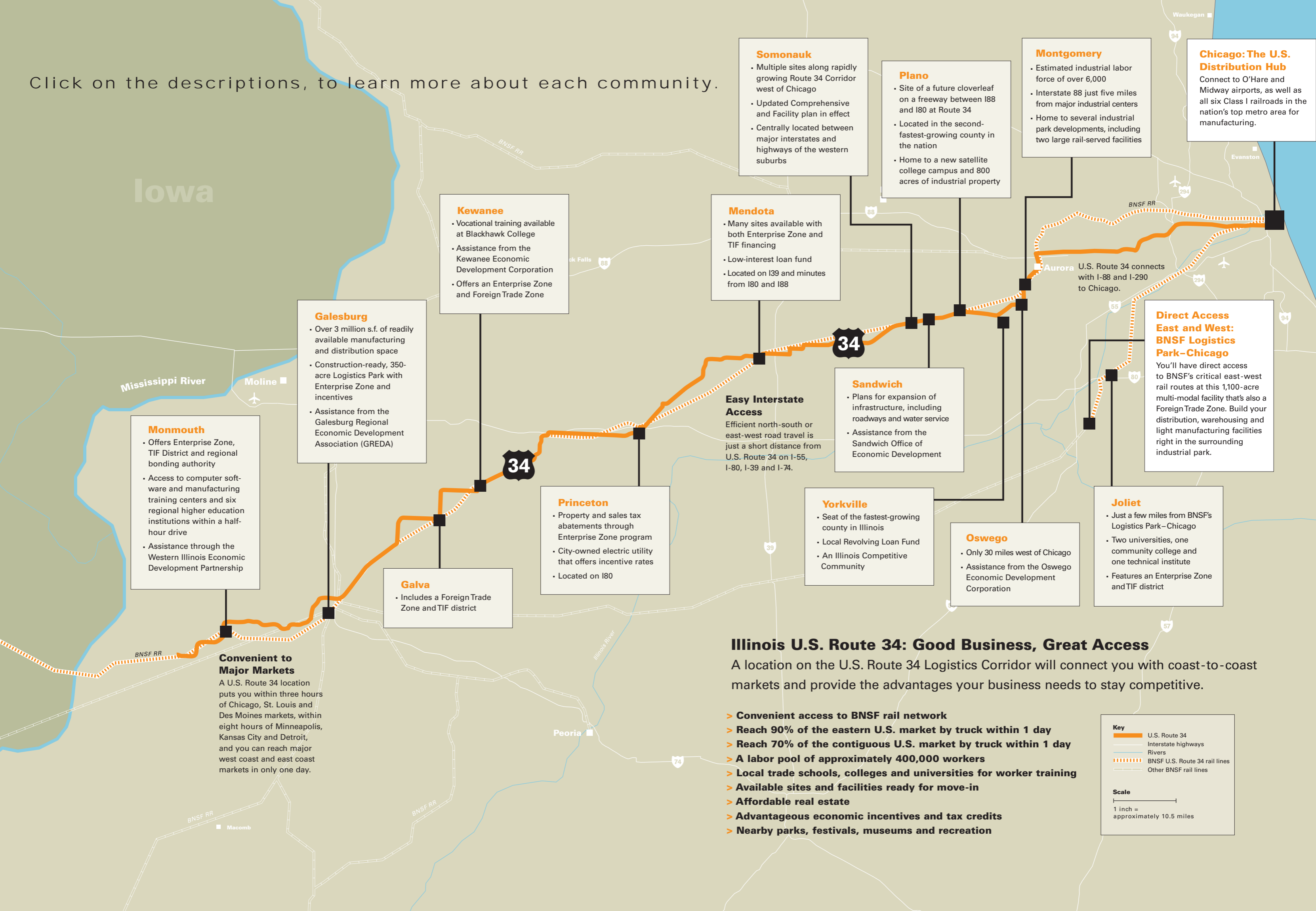


Click on the descriptions, to learn more about each community.



Iowa

Monmouth

- Offers Enterprise Zone, TIF District and regional bonding authority
- Access to computer software and manufacturing training centers and six regional higher education institutions within a half-hour drive
- Assistance through the Western Illinois Economic Development Partnership

Galesburg

- Over 3 million s.f. of readily available manufacturing and distribution space
- Construction-ready, 350-acre Logistics Park with Enterprise Zone and incentives
- Assistance from the Galesburg Regional Economic Development Association (GREDA)

Galva

- Includes a Foreign Trade Zone and TIF district

Kewanee

- Vocational training available at Blackhawk College
- Assistance from the Kewanee Economic Development Corporation
- Offers an Enterprise Zone and Foreign Trade Zone

Princeton

- Property and sales tax abatements through Enterprise Zone program
- City-owned electric utility that offers incentive rates
- Located on I80

Mendota

- Many sites available with both Enterprise Zone and TIF financing
- Low-interest loan fund
- Located on I39 and minutes from I80 and I88

Easy Interstate Access

Efficient north-south or east-west road travel is just a short distance from U.S. Route 34 on I-55, I-80, I-39 and I-74.

Yorkville

- Seat of the fastest-growing county in Illinois
- Local Revolving Loan Fund
- An Illinois Competitive Community

Sandwich

- Plans for expansion of infrastructure, including roadways and water service
- Assistance from the Sandwich Office of Economic Development

Somonauk

- Multiple sites along rapidly growing Route 34 Corridor west of Chicago
- Updated Comprehensive and Facility plan in effect
- Centrally located between major interstates and highways of the western suburbs

Plano

- Site of a future cloverleaf on a freeway between I88 and I80 at Route 34
- Located in the second-fastest-growing county in the nation
- Home to a new satellite college campus and 800 acres of industrial property

Montgomery

- Estimated industrial labor force of over 6,000
- Interstate 88 just five miles from major industrial centers
- Home to several industrial park developments, including two large rail-served facilities

Direct Access East and West: BNSF Logistics Park-Chicago

You'll have direct access to BNSF's critical east-west rail routes at this 1,100-acre multi-modal facility that's also a Foreign Trade Zone. Build your distribution, warehousing and light manufacturing facilities right in the surrounding industrial park.

Joliet

- Just a few miles from BNSF's Logistics Park-Chicago
- Two universities, one community college and one technical institute
- Features an Enterprise Zone and TIF district

Oswego

- Only 30 miles west of Chicago
- Assistance from the Oswego Economic Development Corporation

Chicago: The U.S. Distribution Hub

Connect to O'Hare and Midway airports, as well as all six Class I railroads in the nation's top metro area for manufacturing.

Convenient to Major Markets

A U.S. Route 34 location puts you within three hours of Chicago, St. Louis and Des Moines markets, within eight hours of Minneapolis, Kansas City and Detroit, and you can reach major west coast and east coast markets in only one day.

Illinois U.S. Route 34: Good Business, Great Access

A location on the U.S. Route 34 Logistics Corridor will connect you with coast-to-coast markets and provide the advantages your business needs to stay competitive.

- > Convenient access to BNSF rail network
- > Reach 90% of the eastern U.S. market by truck within 1 day
- > Reach 70% of the contiguous U.S. market by truck within 1 day
- > A labor pool of approximately 400,000 workers
- > Local trade schools, colleges and universities for worker training
- > Available sites and facilities ready for move-in
- > Affordable real estate
- > Advantageous economic incentives and tax credits
- > Nearby parks, festivals, museums and recreation

Key

- U.S. Route 34
- Interstate highways
- Rivers
- BNSF U.S. Route 34 rail lines
- Other BNSF rail lines

Scale

1 inch = approximately 10.5 miles